

Celebrating the Arts at WMES

December 12, 2022

Doors open at 5pm.

Schedule of Performances		
Time	Who	Place
5:15pm	PBC/ P/1M & 1WM	Main Stage
5:30pm	P/1M/PBC	Stage B
5:40pm	1WM	Stage B
5:45pm	2D & 2J	Main Stage
6pm	2J	Stage B
6:15pm	2/3MS, 3H & 3B	Main Stage
6:30pm	3/4B & 3/4 H	Room 209
6:30pm	2D	Stage B
6:40pm	2/3MS	Stage B
6:45	WMES Choir	Main Stage
7pm	4/5R Student Readings	Library
7:15pm	4B, 4H & 4/5R	Main Stage
7:30pm	5vS Student readings	Library
7:45pm	Grade 5's	Main Stage

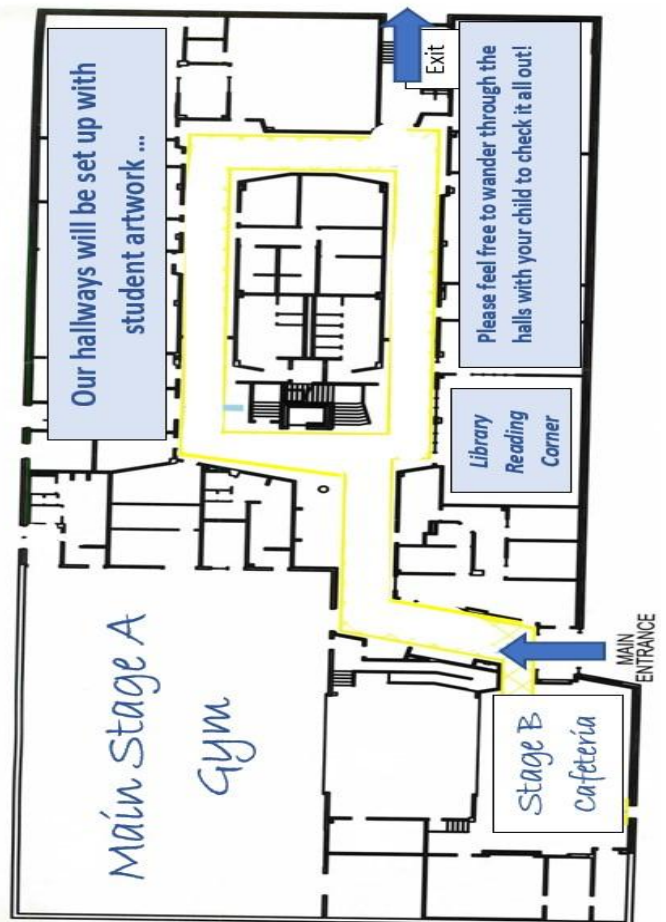
Main Stage: Gymnasium

Stage B: Cafeteria

Library: Student Author Readings

Art Show: Throughout the School

Hot Chocolate & Cookies - Outside



Get a "Selfie" with Earl - the Holiday Dinosaur on the way out!